

Active Logper Antenna

OLP-680M-200-A

The antennas of the 6000 X series are based on an ultra-thin, GOLD-COATED high tech TEFLON base.

Based on this high quality technology, the antenna-frequency-range could again be vastly extended compared to the 7000 X series.

Now the maximum bandwidth available reaches from 680MHz up to as far as 20 GHz. Its small physical antenna-size and low weight make this antenna predestined for mobile use.

The 20GHz frequency range now also allows the detection of unusable signalsources like military radar, various satellite services, very high frequency bugs, etc.

All antennas are developed, individually produced and calibrated. This guarantees highest standard so that we can offer every customer a full 10 years warranty for all antennas.



Features

- Ultra high gain for detecting even lowest RF sources
- Integrated Low Noise Preamplicifier incl. LiPo battery
- Runs with battery or external power supply (included)
- Integrated calibration data on EEPROM (readout via USB)
- Special designed radome for perfect antenna protection
- Gold coating for stable performance, Wide bandwidth
- Coverage of various mobile radio frequency ranges
- Suitable for field-strength and EMC measurements due to high precision
- Compact and sturdy design, Can be used in the lab and for open-field application

Applications

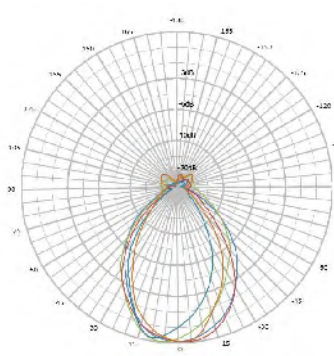
- GSM900, GSM1800, GSM1900 GPS
- UMTS (Universal Mobile Telecommunications System)
- DECT (Digital Enhanced Cordless Telecommunications)
- WiFi, HDMI, Microwave, directional radio, WiMAX, 2,4GHz / 5-6GHz WLAN, UWB (FB2-FB8)

Electrical Specifications

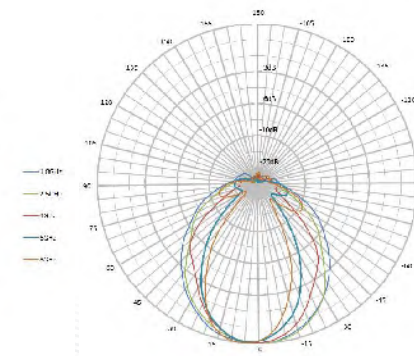
Frequency Range(GHz)	0.68 - 20
Nominal impedance	50 Ohm
VSWR	<1.25(typ.)
Gain	19dBi (typ.)
RF connection	SMA socket (18GHz) or N socket using an adapter
Tripod connection	1/4"
Interface	USB2.0/1.1
Dimensions (L/W/D)	340x200x25 mm
Weight	400gr



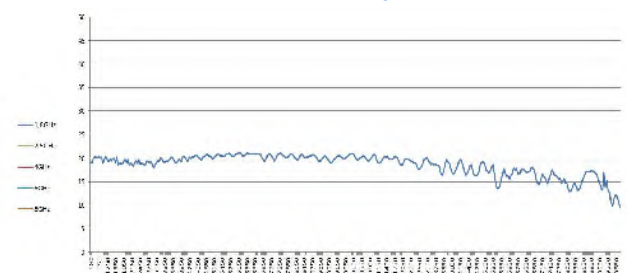
Horizontal Pattern



Vertical Pattern



Gain diagram



Recommended accessories for Antennas

Heavy Plastic Carrycase PRO

Shock resistant, heavy version with padding. Offers spaces for a LOP 70xx or 60xxx antenna and 2 SPECTRAN units with all accessories.

A must for the professional user or outdoor usage!



interior view



exterior view



SMA Cable (1-10m)

1m / 5m / 10m SMA-Cable

High quality special SMA cable for connecting any Antenna or EC-Antenna with various test equipment like our RF Spectrum-Analyzer. You can choose between 3 different cables:

- 1m standard SMA cable (RG316U)
- 5m LowLoss SMA cable (especially low damping)
- 10m LowLoss SMA cable (especially low damping)

All versions: SMA plug (male) / SMA plug (male)

Laser / Compass

Laser for pin pointing any RF source even at bright daylight. Available as 1mW version (red Laser) or 150mW power version (green Laser).

Easy to connect on top of any EC antenna. Including connector and all needed screws. Small Compass Ball for EC X Antennas. Works at any antenna position due to its liquid filled ball. Can be used together with above mentioned laser or separately. Including connector and all needed screws.



Compass



SMA to N Adapter

SMA to N Adapter

This special high quality adapter allows operation of all EC-Antenna with any standard spectrum-analyzer with N connector. Also this adapter is needed to connect EC antennas to a SPECTRAN Spectrum Analyzer.

Especially massive, chrome-plated design. This adapter is usable for very high frequencies up to at least 18GHz. Physical dimensions are just 30x20mm. Nominal impedance 50 Ohms. Layout: SMA socket (female) / Nplug (male).

Included in delivery

- OLP-680M,-200-A active directional measurement antenna
- Low Noise Preamp with integrated LiPo battery (3,5h run time)
- International battery charger and power supply
- Calibration data on EEPROM (readout via USB)
- Typical calibration data with 211 calibration points (10MHz steps!) on CD
- Large aluminum carrying case with foam protection
- Pistol grip with mini tripod function
- SMA tool set with over-torque protection

Options

Option 502 (Tactical 150mW Green Power-Laser)

Extreme military grade. Easy to connect on top of any EC antenna. Including connector and all needed screws. Perfect for pinpointing any RF source even at bright daylight. About 1000x times brighter than our standard 1mW red laser. Very high range up to 15 km.
WARNING: Only for outside use. This is no toy! Please make sure that you are allowed to use and/or import this gadget before placing an order!

Option 510 (Small Compass Ball)

Great gadget to localize a pinpointed RF source. Works at any antenna position due to its liquid filled ball. Can be used together with above mentioned laser or separately. Including connector and all needed screws.