

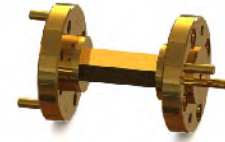
Straight Waveguide Section

OSEC-06-010

OSEC-06-010 is a 1" long, D-band straight waveguide section with a WR-06 waveguide and UG-387/U-M circular flanges.

The straight waveguide is manufactured with a precision machining process to ensure high quality and ruggedness.

The waveguide is offered to cover the frequency range of 110 to 170 GHz.



Features

Frequency Range: 110 to 170 GHz

Rugged Waveguide Configuration

Low Insertion Loss

Applications

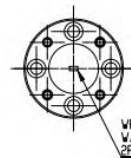
Test Instrumentation

Sub-assemblies

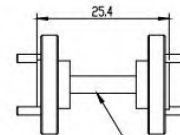
Product Dimensions

Mechanical Specifications

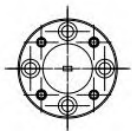
Waveguide Size	WR-06 Waveguide with UG-387/U-M Flange
Insertion Length	1.0"
Flange Material	Brass
Waveguide Material	Copper
Finish	Gold Plated
Weight	0.6 Oz
Outline	WG-FD



WR-06 WAVEGUIDE
W/UG-387/U-M FLANGE
2PLS



WR-06 WAVEGUIDE



P/N	Frequency (GHz)	Waveguide model	Band	Flange model
OSEC-06-010	110-170	WR06	D	UG-387/U-M
OSEC-06-020	110-170	WR06	D	UG-387/U-M
OSEC-08-010	90-140	WR08	F	UG-387/U-M
OSEC-08-020	90-140	WR08	F	UG-387/U-M
OSEC-10-010	75-110	WR10	W	UG-387/U-M
OSEC-10-020	75-110	WR10	W	UG-387/U-M
OSEC-12-010	60-90	WR12	E	UG-387/U
OSEC-12-020	60-90	WR12	E	UG-387/U
OSEC-15-010	50-75	WR15	V	UG-385/U
OSEC-15-020	50-75	WR15	V	UG-385/U
OSEC-19-010	40-60	WR19	U	UG-383/U-M
OSEC-22-010	33-50	WR22	Q	UG-383/U
OSEC-22-020	33-50	WR22	Q	UG-383/U