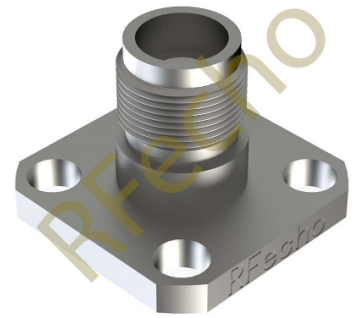


# SuperSMA Jack (Female) 4 Hole .500 Square D590-P09-F01



This model D590-P09-F01 is a Connector utilizes the basic PTFE dielectric interface and features low VSWR mode free through 27 GHz and less than -100 dB RF leakage. The thick outer conductor wall provides great durability to assure reliability in repeat mating, enhancing component performance.

## Features

low VSWR  
free through 27 GHz and less than -100 dB RF leakage.

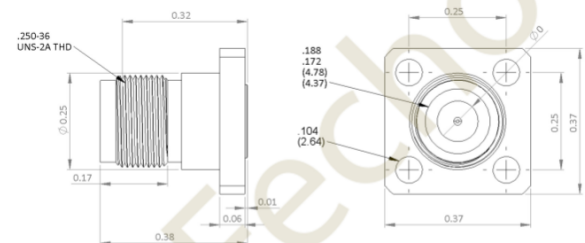
## Available Accessories

50 ohm Seal

## Applications

Telecom Communication  
Sub-assemblies  
Radio equipment and instruments  
Wireless Communication  
Test Labs  
Instrumentations

## PRODUCT DIMENSIONS



## Electrical Specifications

Frequency	(18-27) GHz
Flange Size	.500 SQ
Mounting	4-Hole Flange
Hermetic Seal Available	YES
Accepts Pin Diameter	.009
Gender	Female
Flange Hole Diameter	.102
Tools, C-bore	T-1491-1
Tools, Solder	T-1412-11

RFecho	SMA Connector	D590-P09-F01
Pin Size (.009)	Max. Pin Depth (.065)	Ø 0 (.0602)

## Isolation & VSWR

