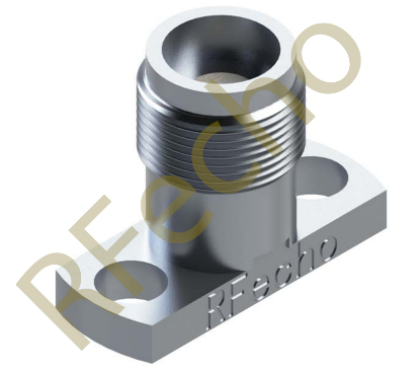


SuperSMA Jack (Female) 2 Hole .500 Long

D590-P20-F04

This model D590-P20-F04 is a Connector utilizes the basic PTFE dielectric interface and features low VSWR mode free through 27 GHz and less than -100 dB RF leakage. The thick outer conductor wall provides great durability to assure reliability in repeat mating, enhancing component performance.



Features

low VSWR
free through 27 GHz and less than -100 dB RF leakage.

Available Accessories

50 ohm Seal

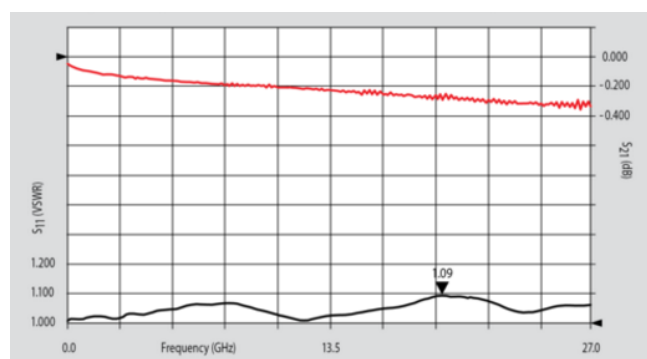
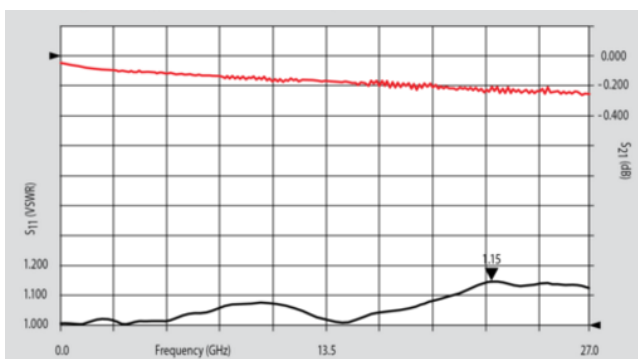
Applications

Telecom Communication
Sub-assemblies
Radio equipment and instruments
Wireless Communication
Test Labs
Instrumentations

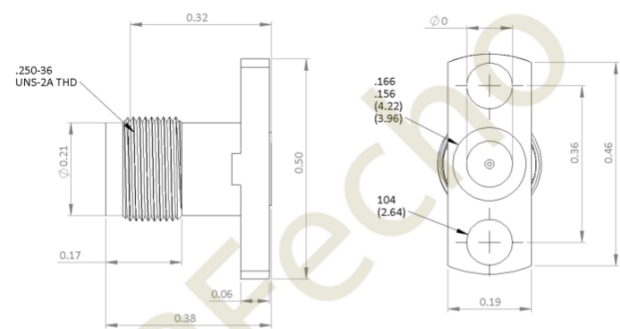
Electrical Specifications

Frequency	(18-27) GHz
Flange Size	.500 L
Mounting	2-Hole Flange
Hermetic Seal Available	NO
Accepts Pin Diameter	.020
Gender	Female
Flange Hole Diameter	.102

Isolation & VSWR



PRODUCT DIMENSIONS



RFecho Pin Size (.020)	SMA Connector Max Pin Depth (.100)	D590-P20-F04 Ø 0 (.1045)
---------------------------	---------------------------------------	------------------------------